



# 32 UPRIGHT

## USER & ASSEMBLY GUIDE

### Xtension Arcade Cabinet

#### Contents:

**Page 1:** Cover

**Page 2:** Base Section - Cabinet Parts List

**Page 3:** Base Section - Hardware List

**Page 4 - 9:** Base Section - Assembly Instructions

**Page 10:** Top Section - Cabinet Parts List

**Page 11:** Top Section - Hardware List

**Page 12-21:** Top Section - Assembly Instructions

**Page 22:** Game On!

#### Required Tools:

Phillips Head Screwdriver

Included M4 Allen Wrench

#### PLEASE NOTE:

Adult Supervision Recommended

For Assembly

2 People Required For Assembly

**PLEASE TRY OUR NEW  
VIDEO INSTRUCTIONS!**

**[youtube.com/@Recroommasters](https://youtube.com/@Recroommasters)**



#### WARNING:

Please be sure to read assembly instructions thoroughly, as improper assembly may lead to instability.

#### NEED SUPPORT?

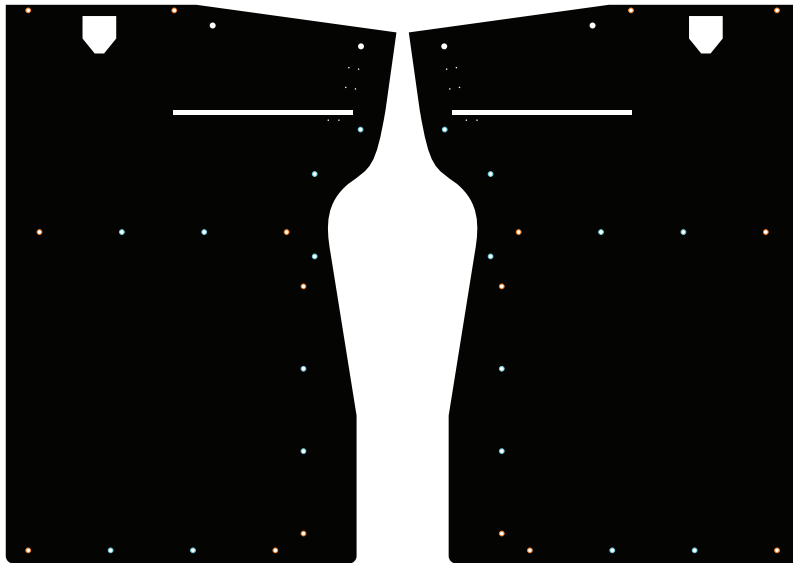
Send an email to:  
**[support@recroommasters.com](mailto:support@recroommasters.com)**



# Xtension Arcade Base Section

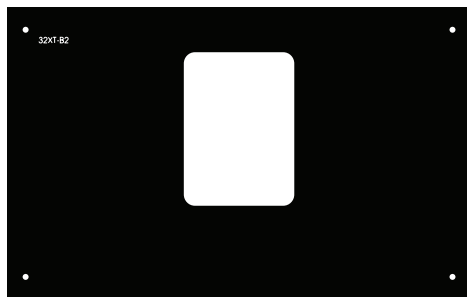
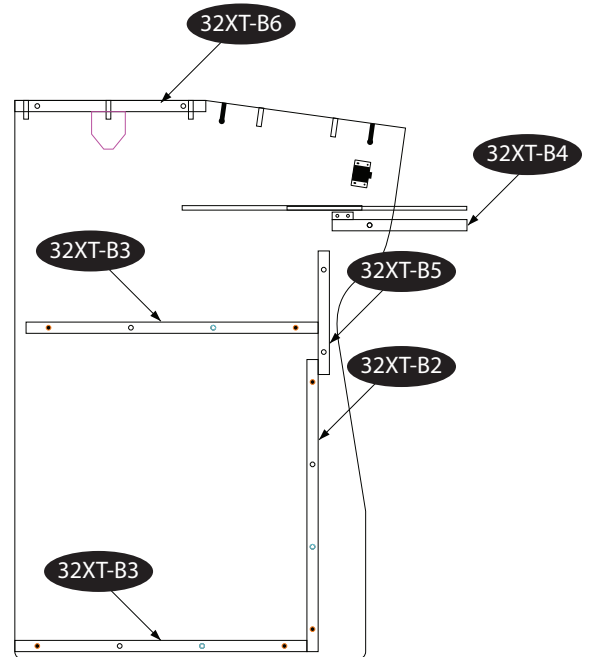
page 2

## Part Description



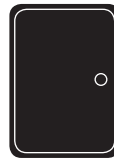
**Part #1** (Right Side Base Upright)

**Part #2** (Left Side Base Upright)



**32XT-B2**  
**1 PC**

**Part #3** (Front/Kick Panel)



**Part #0**  
(Metal Coin Door)  
This Part May Be Optional



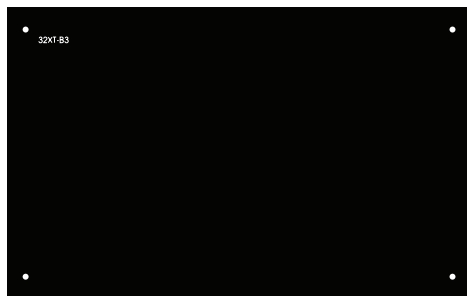
**32XT-B4**  
**1 PC**

**Part #8** (Unmarked Keyboard Door)



**32XT-B5**  
**1 PC**

**Part #5** (Front Top Support)



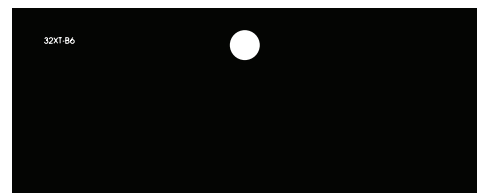
**32XT-B3**  
**2 PCS**

**Part #4** (Base Floor & Middle Shelf)



**1 PC**

**Part #7** (Keyboard Tray)



**32XT-B6**  
**1 PC**

**Part #6** (Center Base Support)

**NOTE:** **Part #3 32XT-B2** and **Part #4 32XT-B3** panels are interchangeable depending on whether or not a Metal Coin Door or Coin Mech are used. If not using a Metal Coin Door or Coin Mech with your cabinet, use one of the **Part #4 32XT-B3** blank panels in place of the **Part #3 32XT-B2** cutout panel on the front of your cabinet. These three panels are interchangeable.

# Xtension Arcade Base Section

page 3

## Hardware Description



**30 PC**

**Wood Dowel Pin**



**16 PC**

**Metal Cross Dowel**



**1 PC**

**M4 Allen Wrench**



**12 PC**

**60mm Bolt (small head)**



**2 PC (SETS)**

**Door Stopper with Screws**



**2 PC (SETS)**

**Push-to-Open Hardware  
Plastic Catch Brackets with screws**





# Xtension Arcade Base Section

page 4

## Assembly Instructions

**PLEASE NOTE: 2 people are required as 1 person will need to support the parts until base is securely bolted.**

### STEP 1

**Parts Needed:** Part #1 / wood dowel pins (x11)

Lay **PART #1** (Right Side Base Upright) of the cabinet on a soft surface and insert the wood dowel pins into any holes that are not through holes. When done there will be a total of 11 dowels installed where the red circles are pictured.

**QUICK TIP:** All panel locations are now directly indicated on each side panel. Simply match the panel number of each cross panel with the corresponding number on the side panel for easy assembly.

### STEP 2

**Parts Needed:** Part #1 / metal cross dowels (x2)  
flathead screwdriver [optional]

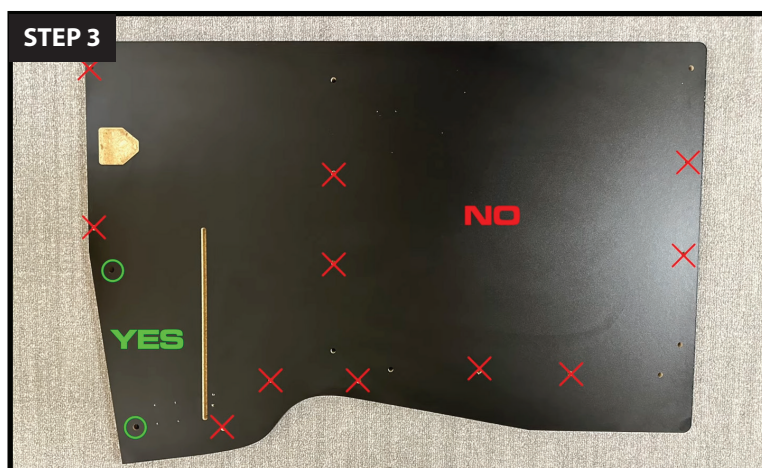
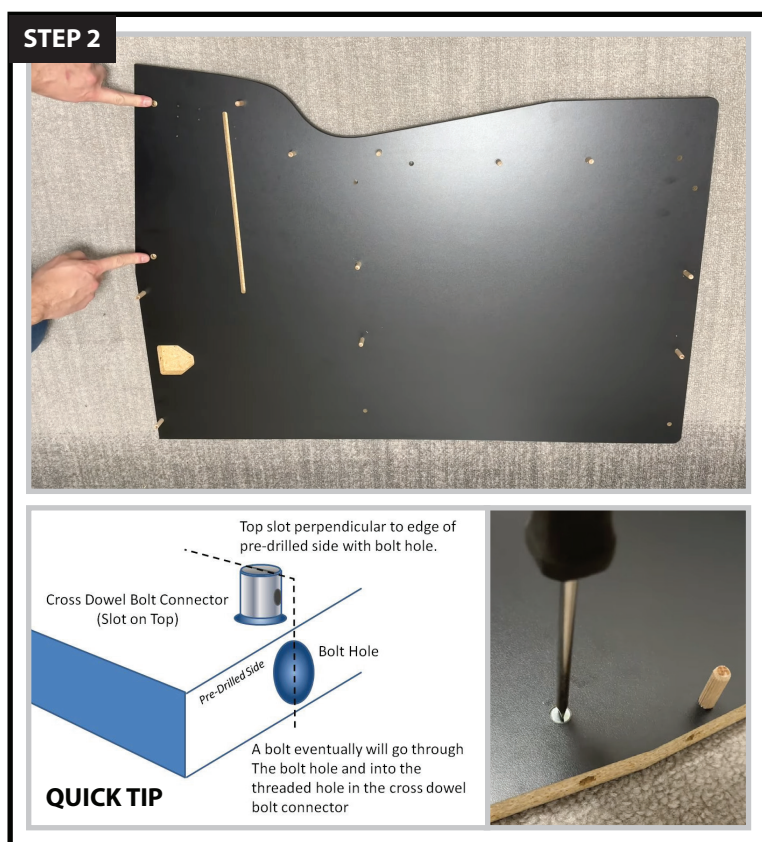
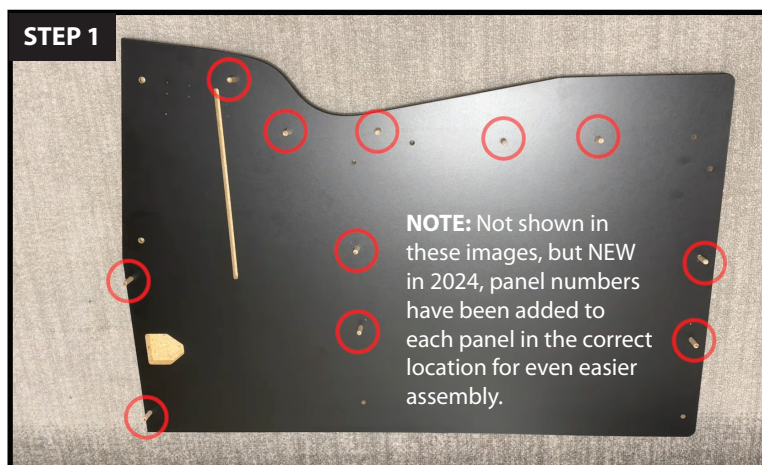
Next install two metal cross dowels in the remaining holes towards the top of the panel.

**QUICK TIP:** When inserting the metal crossed dowels in **STEP 2**, make sure that the slot is facing upwards. The slot must also be aligned with the hole on the side of the panel. If needed you can adjust the position of the cross dowel with a flathead screwdriver, so that it is perfectly aligned with the hole.

### STEP 3

**Parts Needed:** Part #2 / metal cross dowels (x2)

Next lay **PART #2** (Left Side Base Upright) of the cabinet on a soft surface and install two metal cross dowels where the green circles are pictured (same as the previous **STEP 2**), but do not install any of the wood dowel pins on this **PART #2** (Left Side Base Upright) panel. Set this panel aside for now as we will not use it again until we get to **STEP 14**.





# Xtension Arcade Base Section

page 5

## Assembly Instructions

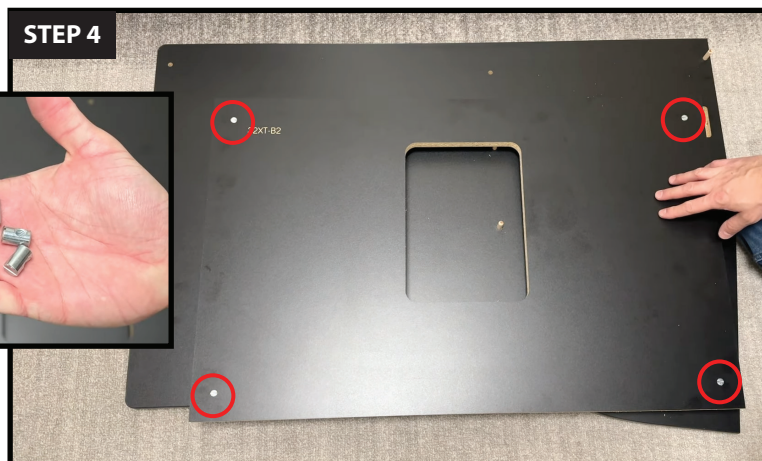
### STEP 4

**Parts Needed:** Part #3  
metal cross dowels (x4)

For this next step, insert four metal cross dowels into the corners of **PART #3 [32XT-B2]** remembering the correct orientation shown in **STEP 2**.



### STEP 4



### STEP 5

**Parts Needed:** Part #1 / Part #3

Next locate the lower pins of **PART #1** (Right Side Base Upright), which are shown in the red circles, and insert **PART #3 [32XT-B2]** onto the pins of **PART #1** (Right Side Base Upright).

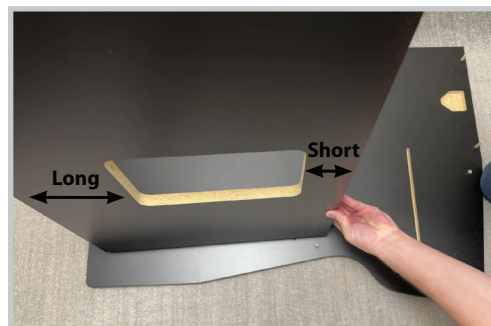
**QUICK TIP:** The longer side underneath the cutout will face the bottom of the cabinet. The panel number [32XT-B2], printed on the panel, will face the inside of the cabinet.

#### QUICK TIP FOR NO COIN DOOR OPTION:

If you did **NOT** purchase a Coin Door, do **NOT** install **PART #3 [32XT-B2]** in this location, instead install **PART #4 [32XT-B3]** so that there is no cutout facing the front of the cabinet. **PART #3 [32XT-B2]** and **PART #4 [32XT-B3]** panels are interchangeable.



### STEP 5



**NOTE:** The **PART #3 32XT-B2** and **PART #4 32XT-B3** panels are interchangeable if not using a Metal Coin Door or Coin Mech.

### STEP 6

**Parts Needed:** Part #4 (x2)  
metal cross dowels (x8)

Next insert metal cross dowels into each of the four corners of both **PART #4 [32XT-B3]** panels. You will need eight total metal cross dowels to fill both **PART #4 [32XT-B3]** panels.

### STEP 6



# Xtension Arcade Base Section

page 6

## Assembly Instructions

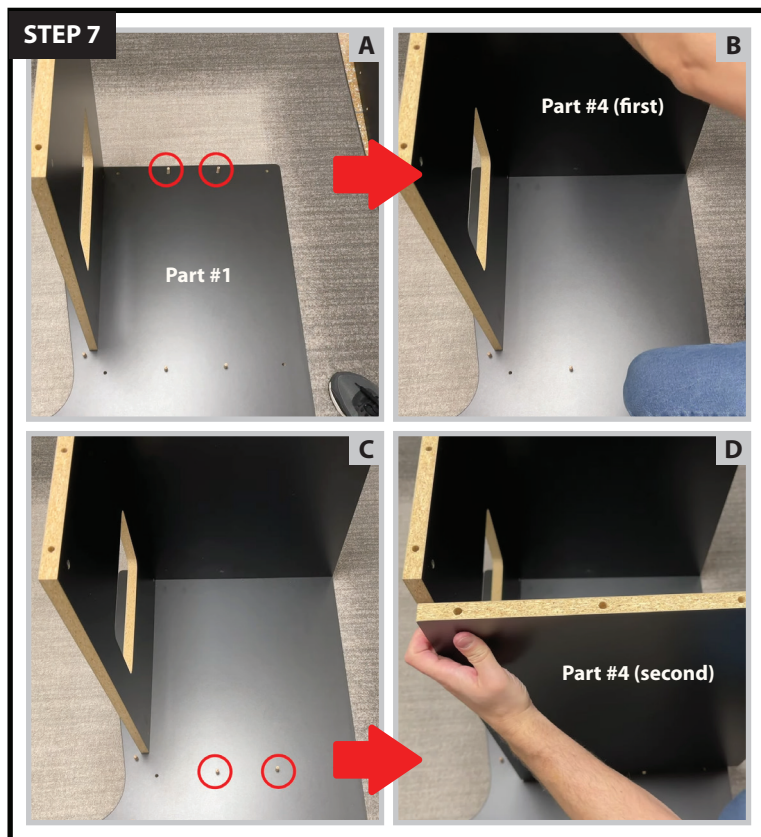
### STEP 7

**Parts Needed:** Part #1 / Part #4 (x2)

Next insert one of the two **PART #4 [32XT-B3]** panels into the bottom two wood dowel pins of the **PART #1** (Right Side Base Upright) panel where the red circles are [see images A & B].

Then insert the second **PART #4 [32XT-B3]** panel into the two center wood dowel pins [see images C & D].

**QUICK TIP:** If you are not using the optional Metal Coin Door or Coin Mech, you can install the **PART #3 [32XT-B2]** front panel with the coin door cutout in either of the **PART #4 [32XT-B3]** positions and then install one of the blank **PART #3 [32XT-B2]** panels in the front instead.



### STEP 8

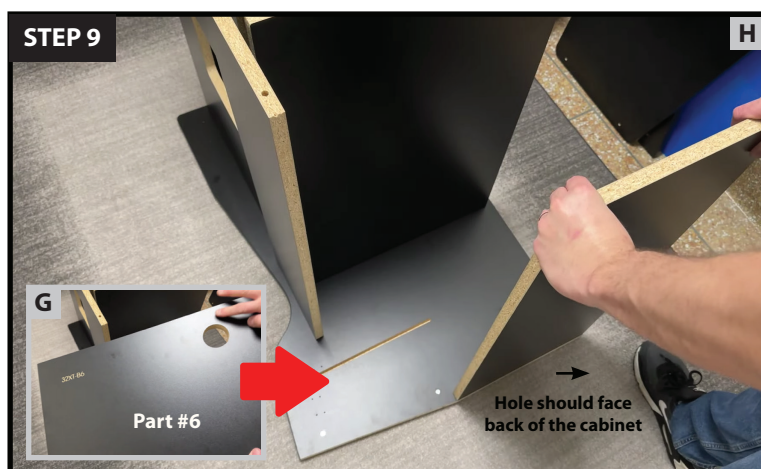
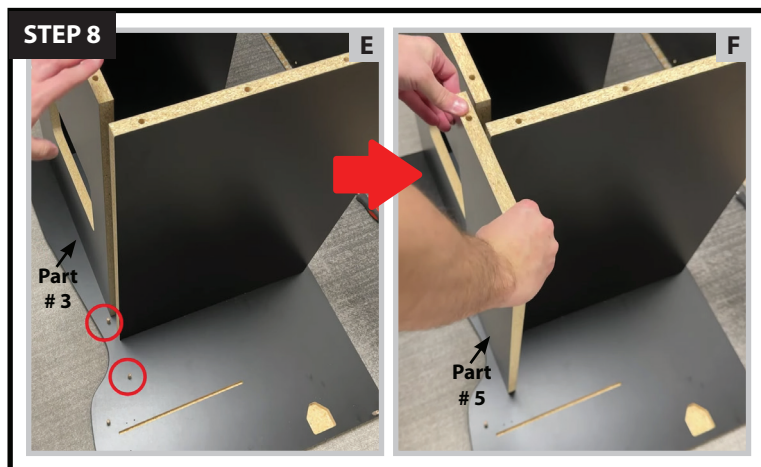
**Parts Needed:** Part #1 / Part #5

We can now install **PART #5 [32XT-B5]** panel into the two wooden dowel pins above the **PART #3 [32XT-B2]** front panel where the red circles are [see images E & F].

### STEP 9

**Parts Needed:** Part #1 / Part #6

Next install **PART #6 [32XT-B6]** center base support panel with the hole [see image G for close up of this panel] facing the back of the cabinet into the two wooden dowel pins at the very top of the **PART #1** (Right Side Base Upright) panel [see image H].





# Xtension Arcade Base Section

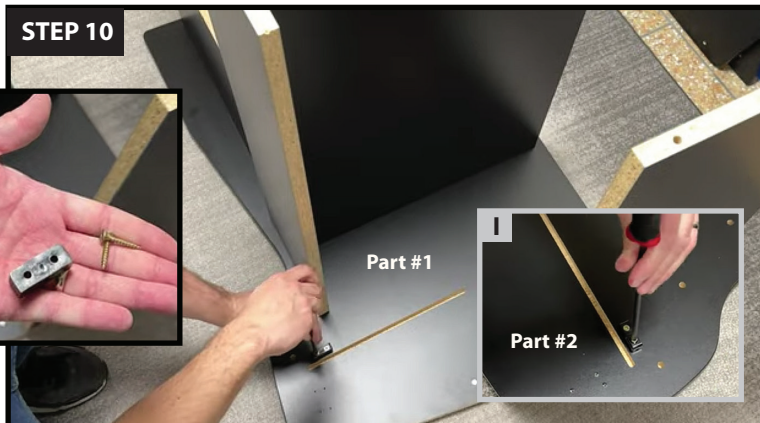
page 7

## Assembly Instructions

### STEP 10

**Parts Needed:** Part #1  
Part #2 / screwdriver  
door stopper (x2) with screws (x4)

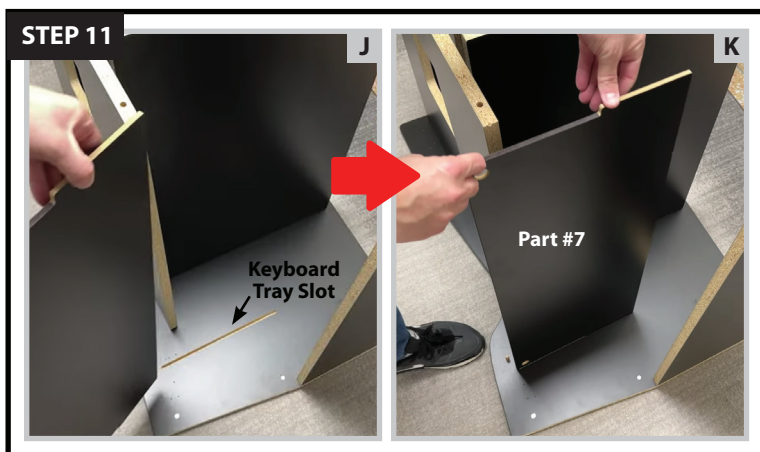
Using the provided screws and screwdriver, screw the door stopper into the pre-drilled holes beneath the keyboard tray slot on the **PART #1** (Right Side Base Upright) panel. Make sure to repeat this step on the **PART #2** (Left Side Base Upright) panel as well [see image I].



### STEP 11

**Parts Needed:** Part #1 / Part #7

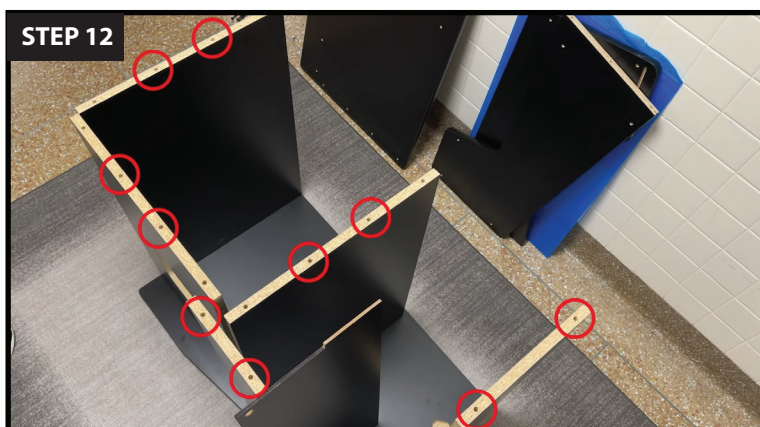
Next insert **PART #7** (Keyboard Tray) into the keyboard tray slot on **PART #1** (Right Side Base Upright) panel and rest it on the adjoining **PART #5 [32XT-B5]** panel [see images J & K].



### STEP 12

**Parts Needed:** Part #3 / Part #4 (x2) / Part #5  
Part #6 / wood dowel pins (x10)

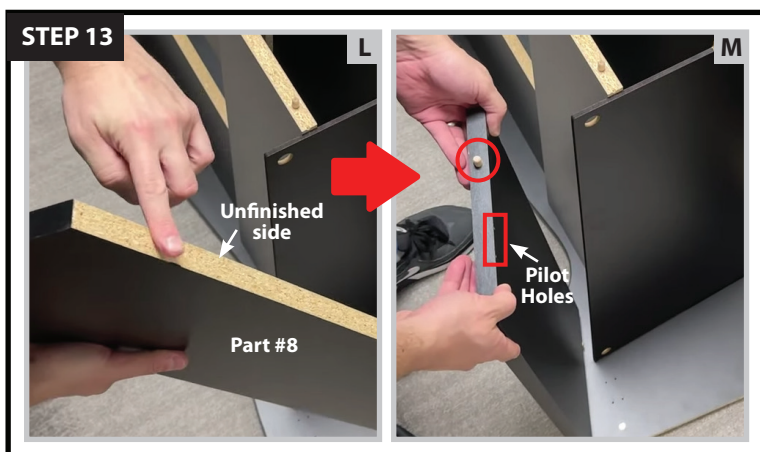
Next insert 10 wood dowel pins into the holes where the red circles are pictured.



### STEP 13

**Parts Needed:** Part #1 / Part #8  
wood dowel pins (x1)

We can now install **PART #8 [32XT-B4]**, the unmarked keyboard door. Face the unfinished side [see image L] towards the bottom of the cab and the pilot holes [see image M] towards the inside of the cab. Insert a dowel pin into the hole on the side of the door as shown in the red circle [see image M] and insert the door into the remaining wood dowel pin on **PART #1** (Right Side Base Upright) in front of the keyboard tray.





# Xtension Arcade Base Section

page 8

## Assembly Instructions

### STEP 14

**Parts Needed:** Part #2 / 60mm bolts (x6)  
4M Allen Wrench

Next hold the door in place while a second person grabs the **PART #2** (Left Side Base Upright) panel that we set aside earlier. Lay this panel over the top of all of the panels pictured in image N. Make sure you look underneath and adjust as necessary until all of the wood dowel pins are in the correct holes. Once everything is fit together tight [see image O], you can now secure the **PART #2** (Left Side Base Upright) panel using six 60mm bolts where the red circles are [see image P] with the provided M4 Allan Wrench [see image Q].

**NOTE: DO NOT OVER TIGHTEN THE BOLTS!**

### STEP 15

For this step, rotate the base of the cabinet 90° to its upright position [see images R & S].

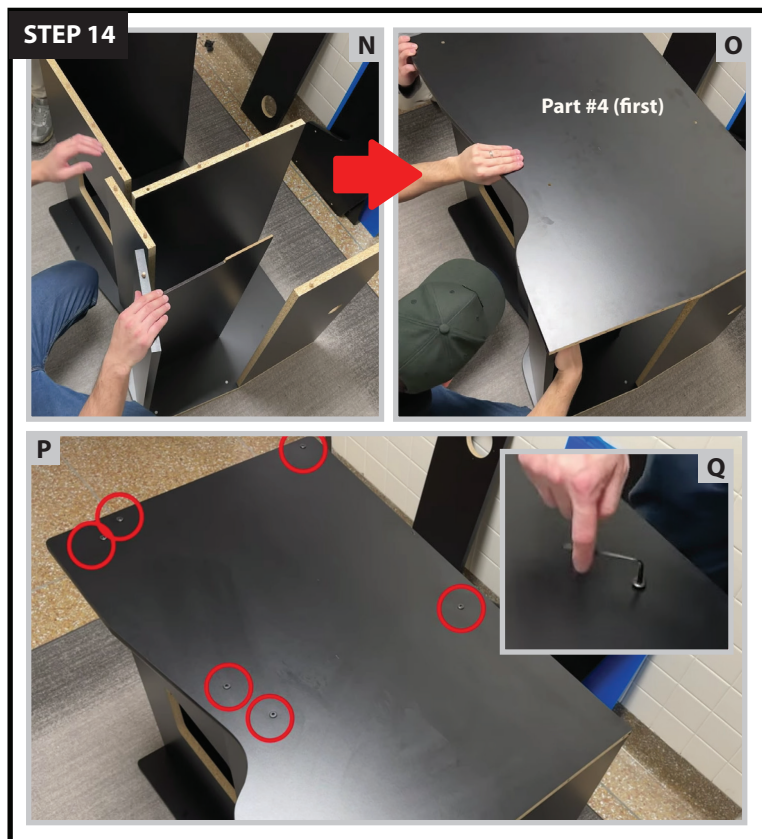
**NOTE: IT IS VERY IMPORTANT TO APPLY PRESSURE ON THE UNBOLTED SIDE AS THERE ARE NO BOLTS SECURING IT IN PLACE WHEN ROTATING! TWO PEOPLE ARE HIGHLY RECOMMENDED FOR THIS STEP.**

### STEP 16

**Parts Needed:** Part #1 / 60mm bolts (x6)  
4M Allen Wrench

Next insert an additional six 60mm bolts on the **PART #1** (Right Side Base Upright) panel where the red circles are with the provided M4 Allan Wrench.

**NOTE: DO NOT OVER TIGHTEN THE BOLTS!**



# Xtension Arcade Base Section

page 9

## Assembly Instructions

### STEP 17

**Parts Needed:** Part #1 / Part #2 / Part #8  
push-to-open hardware (x2) with screws (x8)  
plastic catch brackets (x2) with screws (x4)  
screwdriver

**NOTE: LATCHES HAVE BEEN UPGRADED [SEE IMAGE T], WE DO NOT USE THE OLD BLACK LATCHES [SEE IMAGE U] SEEN IN THE REST OF THIS MANUAL.**

You can now install the latches for the keyboard door to **PART #1** (Right Side Base Upright) and **PART #2** (Left Side Base Upright) panels.

When installing the plastic white catch brackets, make sure to face it towards the top edge of the keyboard door [see image V].

For the latch, make sure the rolling wheel is facing towards the bottom of the cab [see image W].

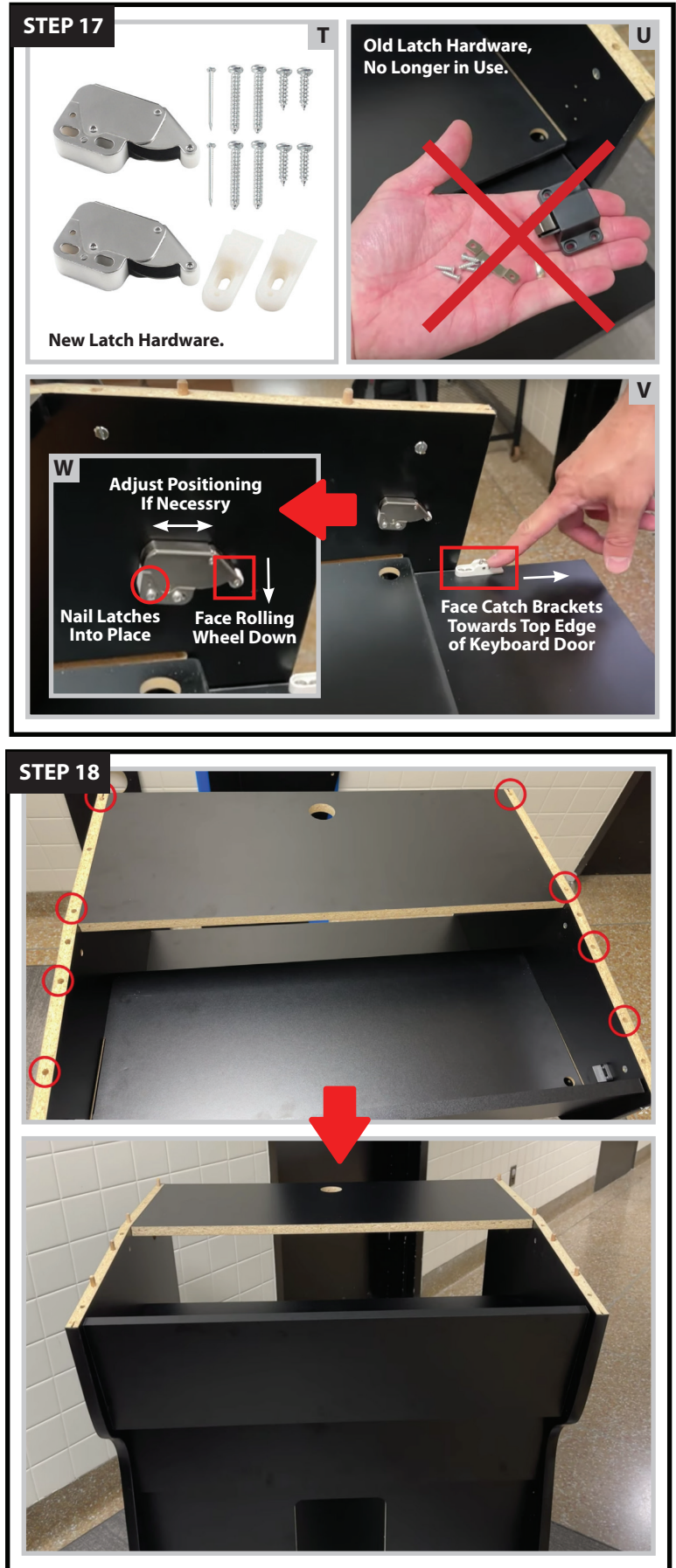
Before nailing the latch into place, we recommend that you install both latches, then test opening and closing the keyboard door while the controller is installed in the cabinet [see page 20, TOP SECTION, STEP 22] to make sure that the door fully closes. If needed you can adjust the front to back position of the latches [see image W]. Once you determine the perfect position for the latch, you can use the included nails to fully secure the latches in place [see image W].

### STEP 18

**Parts Needed:** Part #1 / Part #2  
wood dowel pins (x8)

Finally, insert eight wood dowel pins into the holes where the red circles are shown on **PART #1** (Right Side Base Upright) and also **PART #2** (Left Side Base Upright) panels.

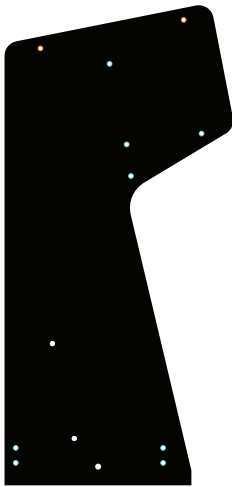
Congratulations! At this point you're halfway done and now let's move on to the top section of the cabinet.



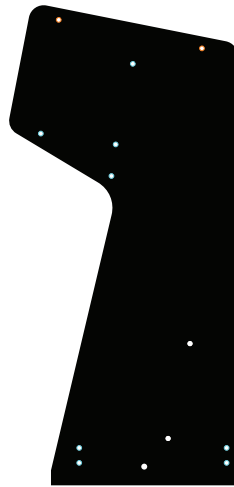
# Xtension Arcade Cabinet Top Section

page 10

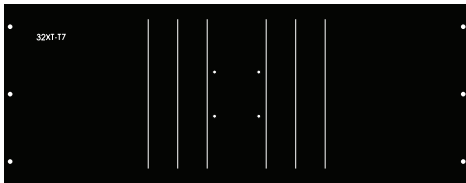
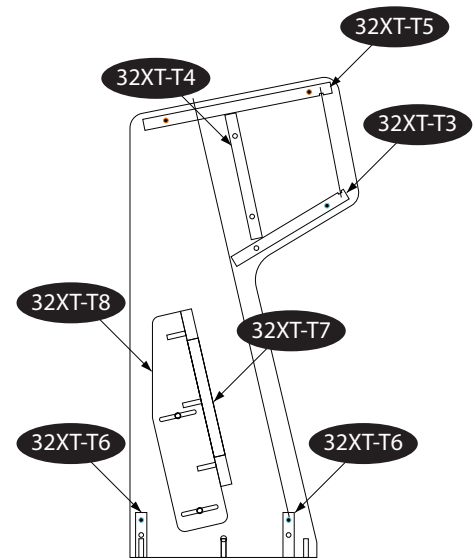
## Part Description



**Part #4** (Right Side Top Upright)



**Part #3** (Left Side Top Upright)



**32XT-T7**  
**1 PC**

**Part #1** (TV/Monitor Mount)



**32XT-T4**  
**1 PC**

**Part #7** (Lower Back)



**Part #10** (Monitor Plexiglass)

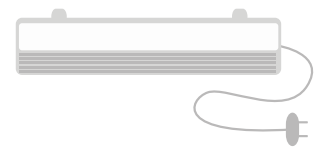


**32XT-T8**  
**2 PC**

**Part #2** (TV/Mounting Side Brackets)



**Part #8** (Speaker Grill Covers)



**Part #11** (LED Light Housing)



**32XT-T6**  
**2 PC**

**Part #5** (TV/Monitor Bottom Support)



**Part #9** (Monitor Bezel)

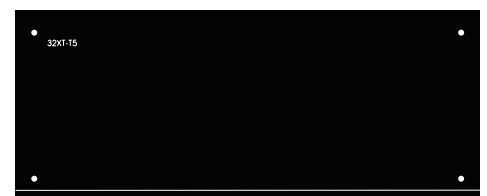


**Part #12** (Marquee Plexiglass)



**32XT-T3**  
**1 PC**

**Part #6** (Speaker Panel)



**32XT-T5**  
**1 PC**

**Part #13** (Top)



# Xtension Arcade Cabinet Top Section

page 11

## Hardware Description



**1 PC**

**M4 Allen Wrench**



**4 PC**

**60mm Bolt (large head)**



**14 PC**

**60mm Bolt (small head)**



**4 PC**

**Monitor Screw**



**4 PC**

**TV Bracket Bolt  
(Black or Silver)**



**13 PC**

**Wood Dowel Pin**



**14 PC**

**Metal Cross Dowel**



**4 PC**

**Large Washer**



**8 PC**

**Speaker Screw**

# Xtension Arcade Cabinet Top Section

page 12

## Assembly Instructions

### PLEASE NOTE:

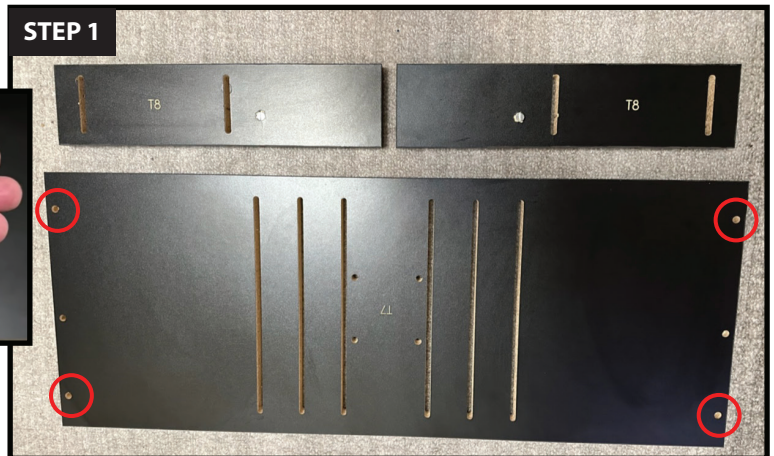
**2 people are required when combining the base and top sections of the cabinet.**

### STEP 1

**Parts Needed:** Part #1 wood dowel pins (x4)



For the top section we'll start by assembling the TV mounting bracket. Lay **PART #1 [32XT-T7]** on a soft surface and insert four dowel pins into the holes where the red circles are pictured.



### STEP 2

**Parts Needed:** Part #1 / Part #2 (x2) metal cross dowels (x2) / 60mm screws (x2) 4M Allen Wrench / flathead screwdriver [optional]

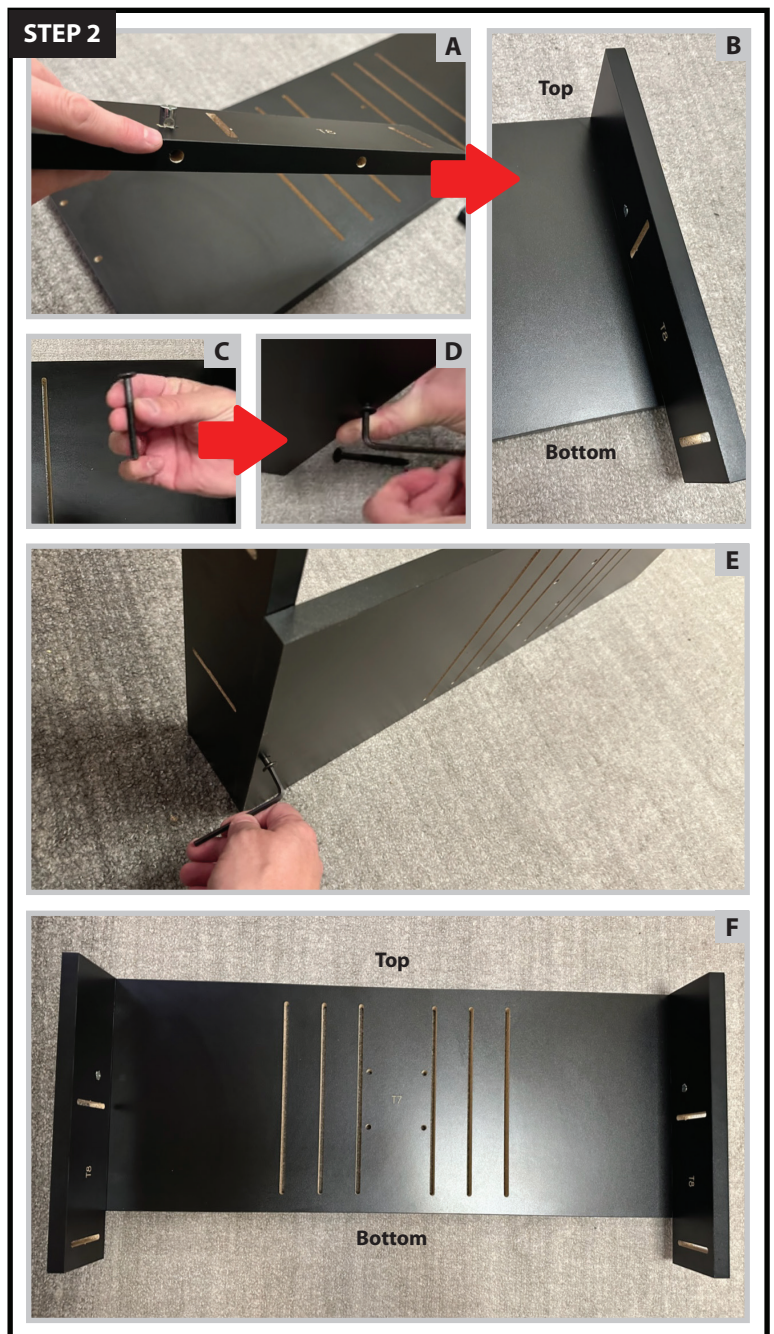
**NOTE:** The TV mounting bracket side panels **PART #2 [32XT-T8]** have changed and are now squared. We no longer use the slanted panels shown in the rest of the manual, but the assembly is the same.



Next, insert a metal cross dowel into one of the **PART #2 [32XT-T8]** as shown in image A. Remember to use the correct orientation from earlier in this manual [see page 4 / Base Section / **STEP 2 QUICK TIP** for inserting the metal cross dowel]. Insert **PART #2 [32XT-T8]** into the dowel pins you previously installed [see image B]. You can now secure the **PART #2 [32XT-T8]** side panel to the rest of the **PART #1 [32XT-T7]** bracket with a 60mm bolt by flipping over the **PART #1 [32XT-T7]** bracket and inserting the 60mm bolt into the hole where the metal cross dowel is and secure it in place with the provided M4 Allen Wrench [see images C & D].

Repeat **STEP 2** on the other **PART #2 [32XT-T8]** left side panel [see image E].

When finished, the completely assembled TV/monitor bracket should look like image F.





# Xtension Arcade Cabinet Top Section

page 13

## Assembly Instructions

### STEP 3

**Parts Needed:** Part #3 / metal cross dowel (x1)  
wood dowel pins (x5)

We will now move on to the **PART #3** (Left Side Top Upright) panel of the cabinet. Insert a metal cross dowel into the bottom center hole where the green circle is located. Then install five wood dowel pins into the red circles are located.

### STEP 4

**Parts Needed:** Part #4 / metal cross dowel (x1)

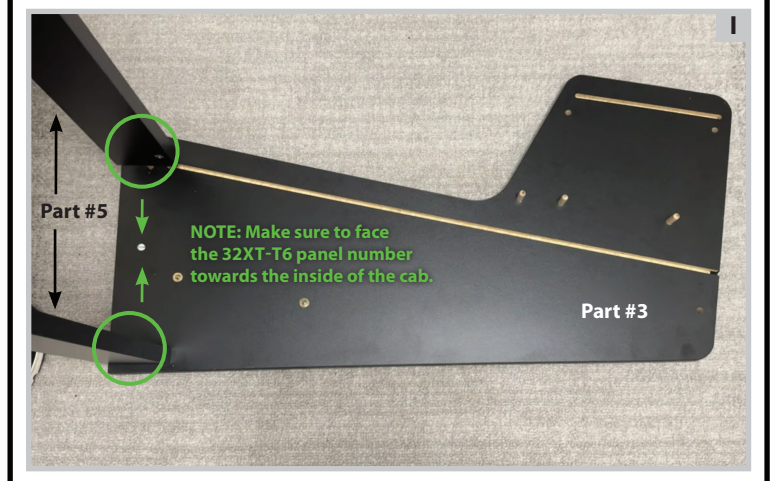
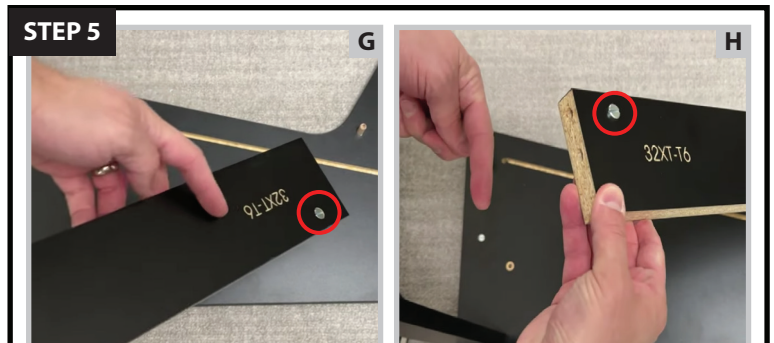
Next, insert a metal cross dowel into the **PART #4** (Right Side Top Upright) panel where the red circle is located.

### STEP 5

**Parts Needed:** Part #3 / Part #5 (x2)  
metal cross dowels (x4)

Next, insert two metal cross dowels into one of the **PART #5 [32XT-T6]** panels [see image G]. Make sure to face the panel number towards the inside of the cabinet and insert the panel into the wood dowel pin where the lower green circle is shown in image I.

Repeat these steps on the second **PART #5 [32XT-T6]** panel [see image H]. Once again, remember to face the panel number towards the inside of the cabinet and insert the panel into the wood dowel pin where the higher green circle is shown in image I.





# Xtension Arcade Cabinet Top Section

page 14

## Assembly Instructions

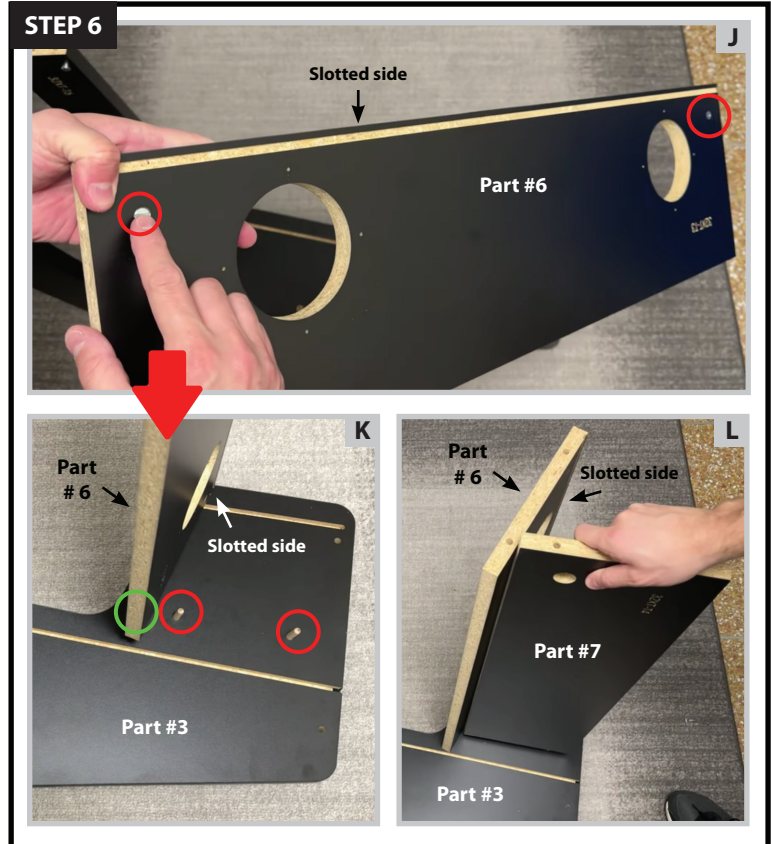
### STEP 6

**Parts Needed:** Part #3 / Part #6 / Part #7  
metal cross dowels (x2)

Next, install two metal cross dowels into **PART #6 [32XT-T3]** where the red circles are located [see image J]. Make sure to face the slotted side towards the front of the cabinet and insert into the single pin where the green circle is located [see image K].

The red circles in image K show where you will need to install **PART #7 [32XT-T4]**. Insert **PART #7 [32XT-T4]** into these two wood dowel pins above **PART #6 [32XT-T3]** [see image L].

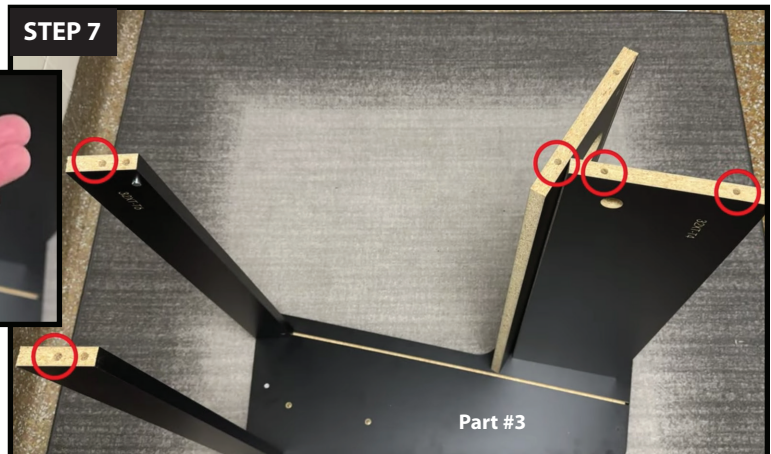
When finished **PART #6 [32XT-T3]** and **PART #7 [32XT-T4]** should be resting next to each other with the slotted side on the inside of these two parts as seen in image L.



### STEP 7

**Parts Needed:** Part #5 (x2) / Part #6 / Part #7  
wood dowel pins (x5)

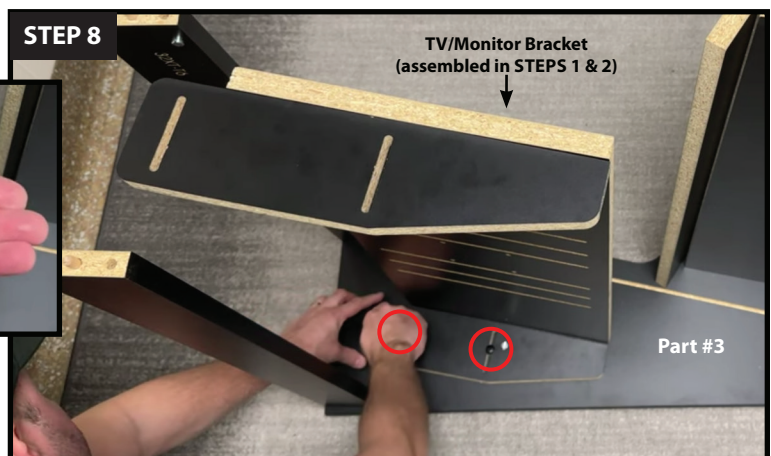
Next, install five wood dowel pins into the holes shown in the red circles located here.



### STEP 8

**Parts Needed:** Part #3 /  
TV bracket bolts (x2)  
TV/monitor bracket (assembled in [STEPS 1 & 2](#))

Place the TV/monitor bracket [previously assembled in [STEPS 1 & 2](#)] in place and secure to **PART #3** (Left Side Top Upright) by hand tightening two of the four TV bracket bolts where the red circles are located.



# Xtension Arcade Cabinet Top Section

page 15

## Assembly Instructions

### STEP 9

**Parts Needed:** Part #4  
60mm bolts (x3)  
M4 Allan Wrench

Now you can lay the **PART #4** (Right Side Top Upright) panel over the top. Look underneath and adjust as necessary until all of the wood dowel pins are in the correct holes. Secure the **PART #4** (Right Side Top Upright) panel using three 60mm bolts where the red circles are with the provided M4 Allan Wrench.

**NOTE: DO NOT OVER TIGHTEN THE BOLTS!**

### STEP 10

**Parts Needed:** Part #4 / TV bracket bolts (x2)  
TV/monitor bracket (assembled in [STEPS 1 & 2](#))

You can now secure the left side of the TV/monitor bracket [previously assembled in [STEPS 1 & 2](#)] by hand tightening the two remaining TV bracket bolts to the **PART #4** (Right Side Top Upright) where the red circles are located.

### STEP 11

For this step, rotate the top of the cabinet 90° to its upright position [see images M & N].

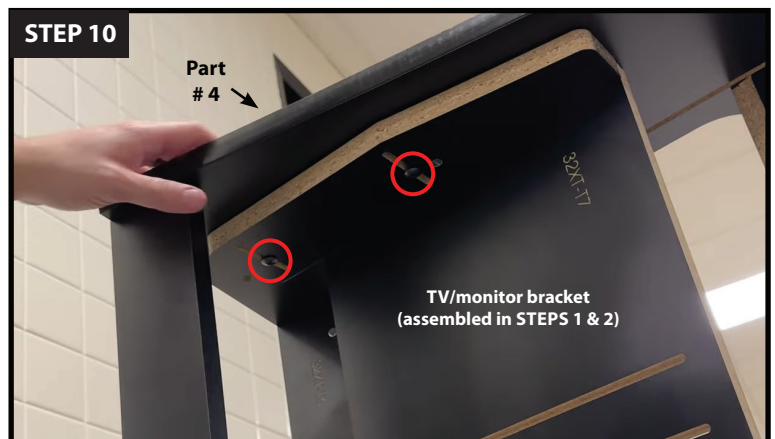
**NOTE: IT IS VERY IMPORTANT TO APPLY PRESSURE ON THE UNBOLTED SIDE AS THERE ARE NO BOLTS SECURING IT IN PLACE WHEN ROTATING!**

### STEP 12

**Parts Needed:** Part #3 / 60mm bolts (x3)  
4M Allen Wrench

Next insert an additional three 60mm bolts on the **PART #3** (Left Side Top Upright) panel where the red circles are located with the provided M4 Allan Wrench. [similar to [STEP 9](#)]

**NOTE: DO NOT OVER TIGHTEN THE BOLTS!**





# Xtension Arcade Cabinet Top Section

page 16

## Assembly Instructions

### STEP 13

**Parts Needed:** top section of cabinet  
base section of cabinet

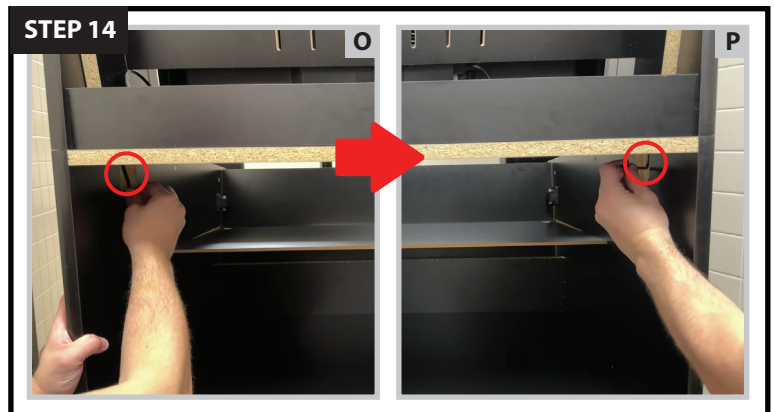
With the assistance of a second person, lift the top half of the cabinet and align it with the four dowel pins on top of the base section where the red circles are located. Once everything is lined up, drop it into place.



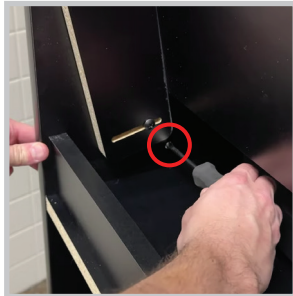
### STEP 14

**Parts Needed:** top section of cabinet  
60mm bolts (x2) / 4M Allen Wrench  
flathead screwdriver [optional]

From the back of the cabinet insert two 60mm bolts into the recessed sections on both sides of the cabinet where the red circles are located. It is best to hand tighten the bolts as much as possible and then finish them off using the provided M4 Allen Wrench [see images O & P].



**QUICK TIP:** If the bolts are not going in smoothly you can adjust the position of the metal cross dowels in the top section using a flathead screwdriver.

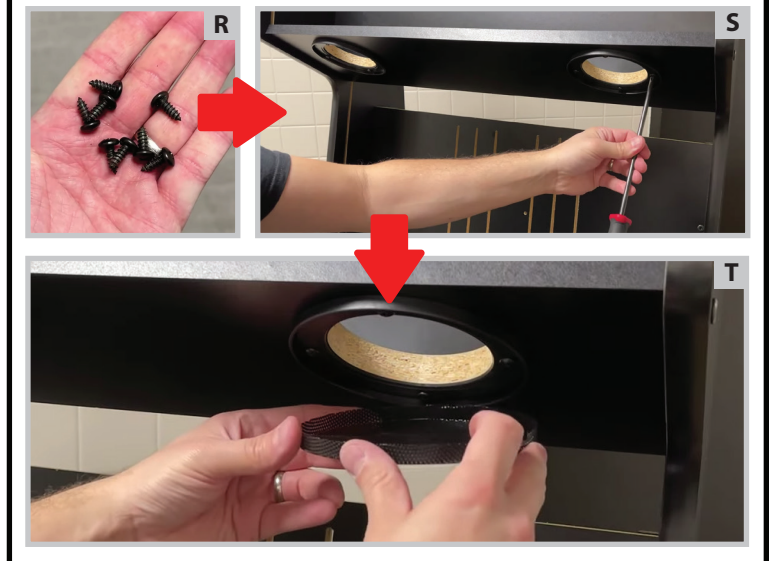


### STEP 15

**Parts Needed:** Part #6 / speaker screws (x8) / screwdriver / Part #8 (speaker grill covers) (x2)

Next, separate **PART #8** speaker grills from the plastic rings [see image Q]. Using the provided screws, screw the plastic speaker grill rings into the pilot holes on the **PART #6 [32XT-T3]** panel using a screwdriver [see images R & S].

Finally, reinsert both speaker grills into both plastic speaker grill rings [ see image T].





# Xtension Arcade Cabinet Top Section

page 17

## Assembly Instructions

### STEP 16

**Parts Needed:** TV or Monitor and cables  
TV/monitor bracket (assembled in [STEPS 1 & 2](#))

You can now attach any necessary cables to the back of your TV [see image U]. Then route all of the cables from your TV through the cable management hole where the red circle is located [see image V]. And finally, rest the TV against the mounting bracket [see image W].

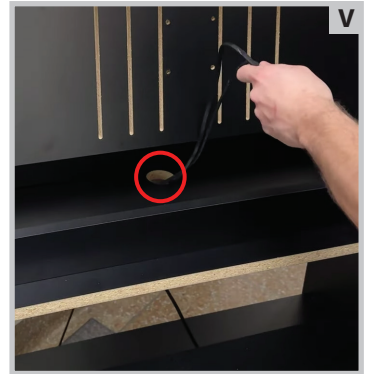
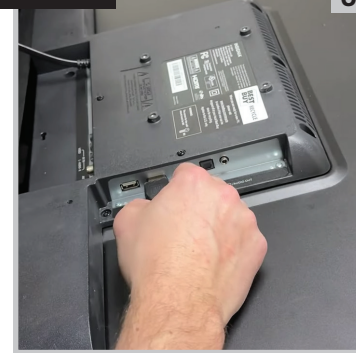
#### QUICK TIP:

For a more detailed video on mounting a TV or monitor, please see the link below:

[www.youtube.com/watch?v=AAXStZKNjc8&t=6s](http://www.youtube.com/watch?v=AAXStZKNjc8&t=6s)



#### STEP 16

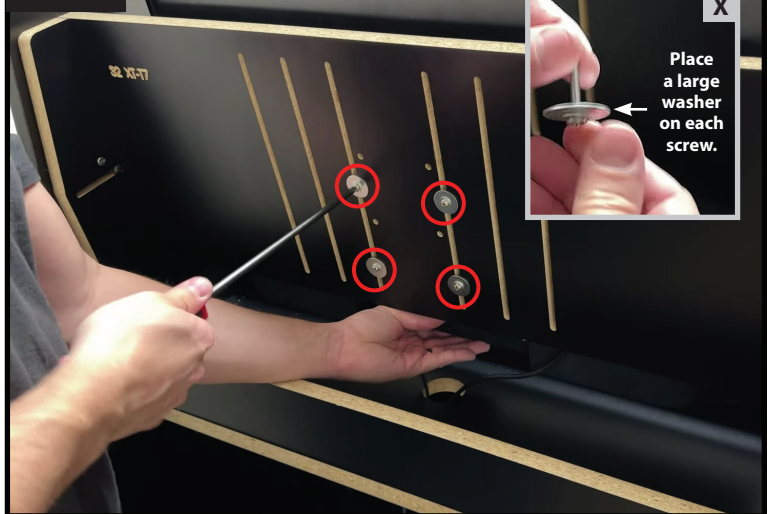


### STEP 17

**Parts Needed:** screwdriver / monitor screws (x4)  
TV/monitor bracket (assembled in [STEPS 1 & 2](#))  
large washers (x4)

Next, place a large washer onto each of the four monitor screws. Secure the display to the mounting bracket from the back of the cabinet with the four monitor screws. It is best to hand tighten each screw as we will be adjusting the vertical position of the display. Once the TV/monitor is in the correct position, you will tighten each screw with a screwdriver.

#### STEP 17



# Xtension Arcade Cabinet Top Section

page 18

## Assembly Instructions

### STEP 18

**Parts Needed:** top section of cabinet  
Part #9 (monitor bezel)  
Part #10 (monitor plexiglass)

Next, install **PART #9** (monitor bezel) by first bending it along the scored lines to separate the two pieces [see images Y & Z]. This bezel is used to cover any gaps around the monitor.

Next, remove the blue protective film from **PART #10** (monitor plexiglass) [see image A].

Position **PART #9** (monitor bezel) behind **PART #10** (monitor plexiglass) with the thicker edge facing the top of the cabinet and the thinner edge facing the bottom [see image B].

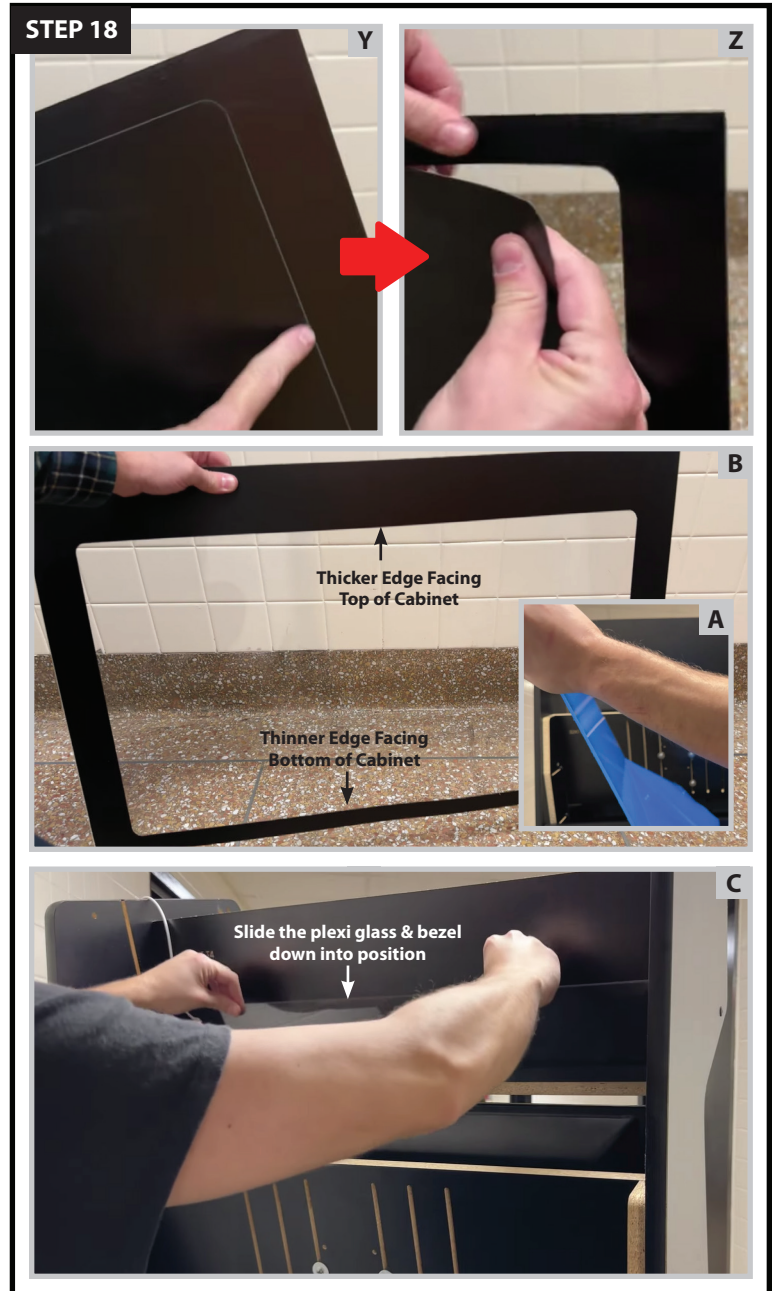
Then slide both **PART #9** (monitor bezel) and **PART #10** (monitor plexiglass) into the grooves on the top of the cabinet [see image C].

**NOTE: PART #9 (MONITOR BEZEL) IS NOT SHOWN IN IMAGE C OR THE REST OF THE IMAGES.**

### STEP 19

**Parts Needed:** top section of cabinet  
TV/monitor bracket (assembled in [STEPS 1 & 2](#))  
four TV bracket bolts / screwdriver

Adjust the front to back position of the TV bracket so that it is pushing against the **PART #9** (monitor bezel) essentially sandwiching **PART #9** (monitor bezel) between the Monitor and **PART #10** (monitor plexiglass). Once in place, tighten the four TV bracket bolts to secure it in place where the red circles are located.





# Xtension Arcade Cabinet Top Section

page 19

## Assembly Instructions

### STEP 20

**Parts Needed:** top section of cabinet  
adhesive dots (x2) / Part #11 (LED light housing)  
Part #12 (marquee plexiglass).

Next, peel off the backing from the adhesive dots [see image D] and apply a dot to each side of **PART #11** (LED light housing) [see image E]. Stick **PART #11** to the rear Marquee panel and route the wires through where the red circle is located [see image F].

You can now install **PART #12** (marquee plexiglass) into the slots on the side of the cabinet [see image F]. Flex the marquee plexiglass as necessary to get it in place in the correct slots [see image G].

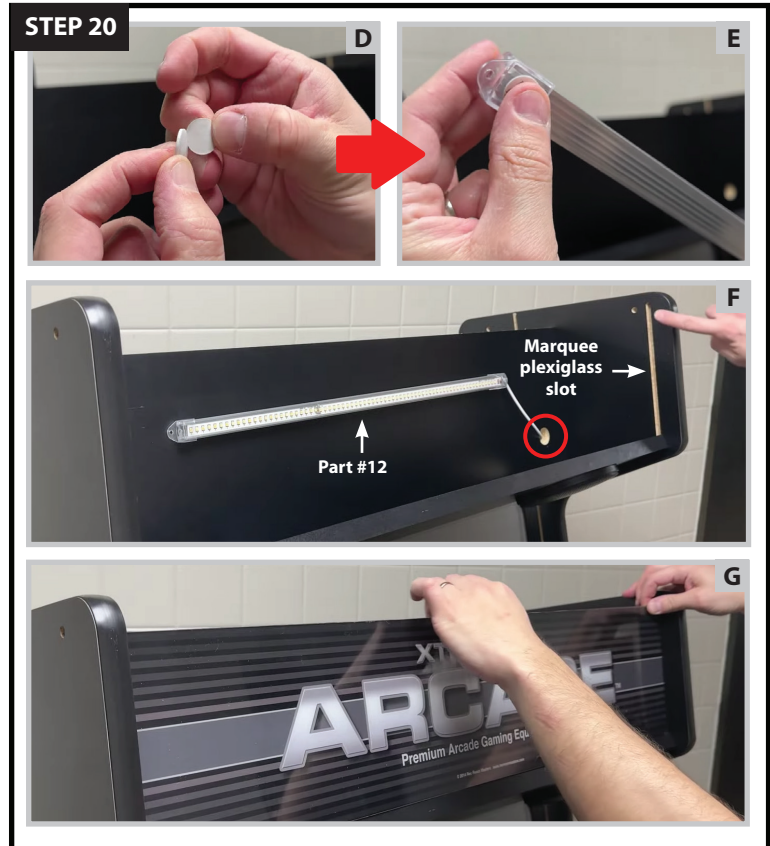
### STEP 21

**Parts Needed:** Part #13 / metal cross dowels (x4)  
top section of cabinet / 60mm bolts (x4)  
M4 Allen Wrench / Part #12 (marquee plexiglass)

Next, install four metal cross dowels into the corners of **PART #13 [32XT-T5]**, two of which are shown where the red circles are located in image H. Make sure to align the slotted side with the top of **PART #12** (marquee plexiglass) and carefully drop it into place [see image I].

Finally, secure the **PART #13 [32XT-T5]** using four 60mm bolts. The red circles in image J show where two of the bolts are located. The other two would appear on the opposite side of the cabinet.

**NOTE: DO NOT OVER TIGHTEN THE BOLTS!**





# Xtension Arcade Cabinet Top Section

page 20

## Assembly Instructions

### STEP 22

#### Parts Needed:

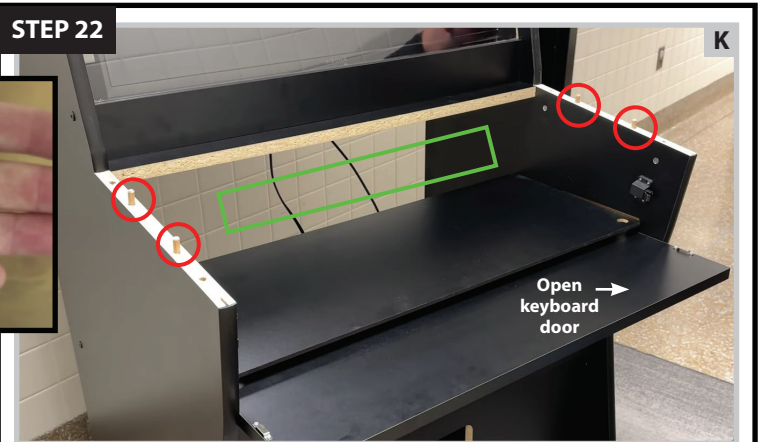
base section of cabinet  
extension controller  
large head bolts (x4)  
M4 Allen Wrench

Open the keyboard door, then pass the controller's cables through the opening in the back of the cabinet [see the green rectangle in image K]. Align the controller over the four front wood dowel pins [see red circles in image K] of the base section of the cabinet. Then push down on the controller until flush. Secure the controller in place using the four large head bolts where the red circles are located [see image L].

**NOTE: DO NOT OVER TIGHTEN THE BOLTS AS YOU MAY CRACK THE PLEXI GLASS OVERLAY!**

### STEP 23

The two panels shown in this picture can be discarded as they are extra panels that were used only for shipping purposes.



# Xtension Arcade Cabinet Top Section

page 21

## Assembly Instructions

### STEP 24 [OPTIONAL]

**Parts Needed:** Part #0 coin door / screwdriver  
base section of cabinet / coin door hardware

To install the optional coin door, start by hand tightening the mounting brackets along the perimeter of the door where the red circles are located in image M.

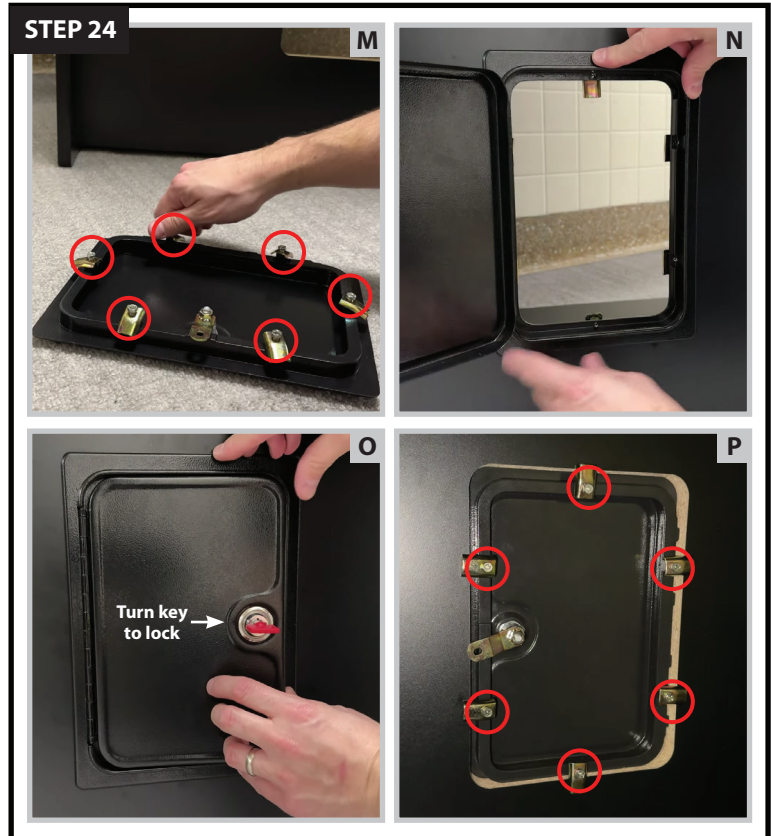
#### QUICK TIP:

For details on how to assemble & install the coin mech, please see this link

[www.youtube.com/watch?v=IZfmrTYa8UY](https://www.youtube.com/watch?v=IZfmrTYa8UY)



Next, place the coin door into the panel cutout, moving any brackets out of the way as necessary [see image N]. Once fully installed, close the door and lock it [see image O]. From the back of the cabinet, swing the brackets to make contact with the wood and tighten them using a screwdriver [as indicated by the red circles in image P].







THANK YOU FOR YOUR PURCHASE.

**GAME ON!**



**Rec Room Masters**    [www.recroommasters.com](http://www.recroommasters.com)  
email: [support@recroommasters.com](mailto:support@recroommasters.com)